

TEST SQUARE: 10CM x 10CM / 4 INCHES x 4 INCHES



## Flared & Straight-legged Trousers

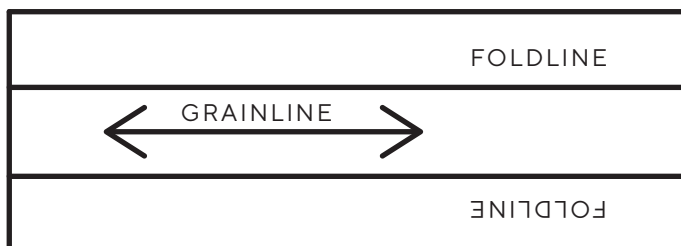
PROJECT DESIGN © LOVE PRODUCTIONS 2020  
THIS DESIGN IS PROTECTED BY COPYRIGHT  
AND MUST NOT BE MADE FOR RESALE.

1.5 CM (5/8-IN) SEAM ALLOWANCE INCLUDED (UNLESS OTHERWISE STATED)

1A

# Flared & Straight- legged Trousers

BELT LOOP - CUT 5



1B

# Flared & Straight- legged Trousers

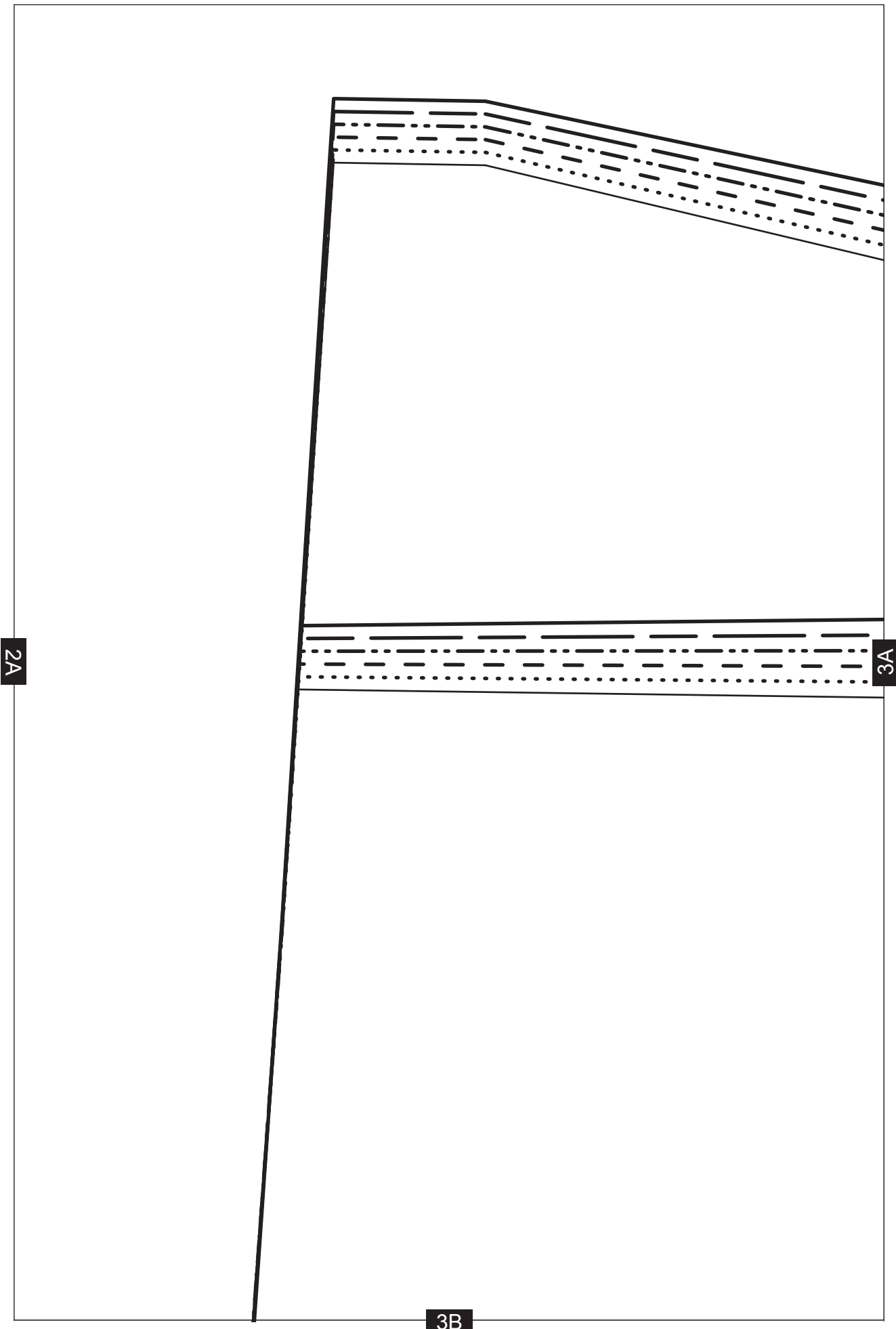
BACK POCKET - CUT 2



1A

2A

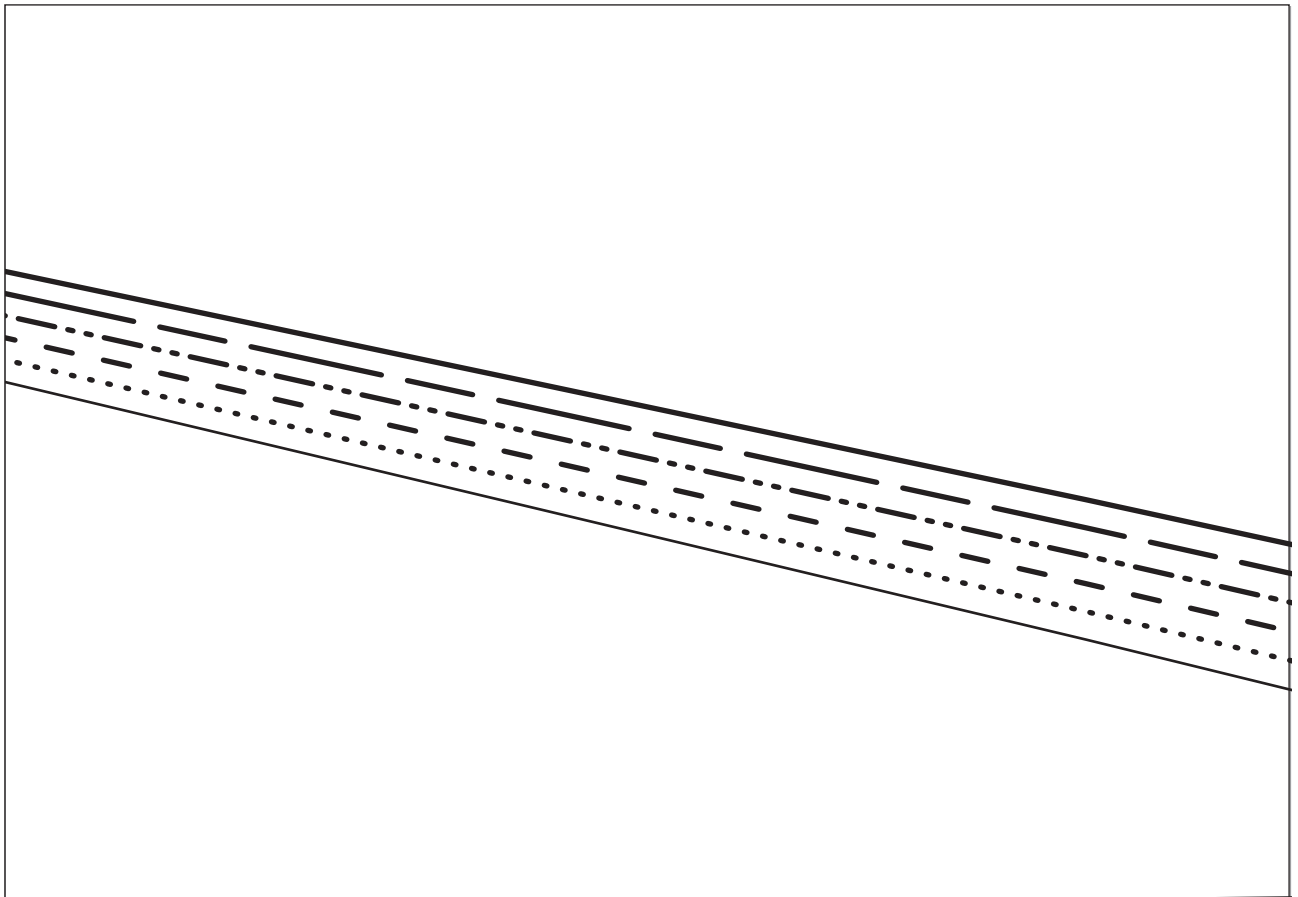
2B



2A

3A

3B

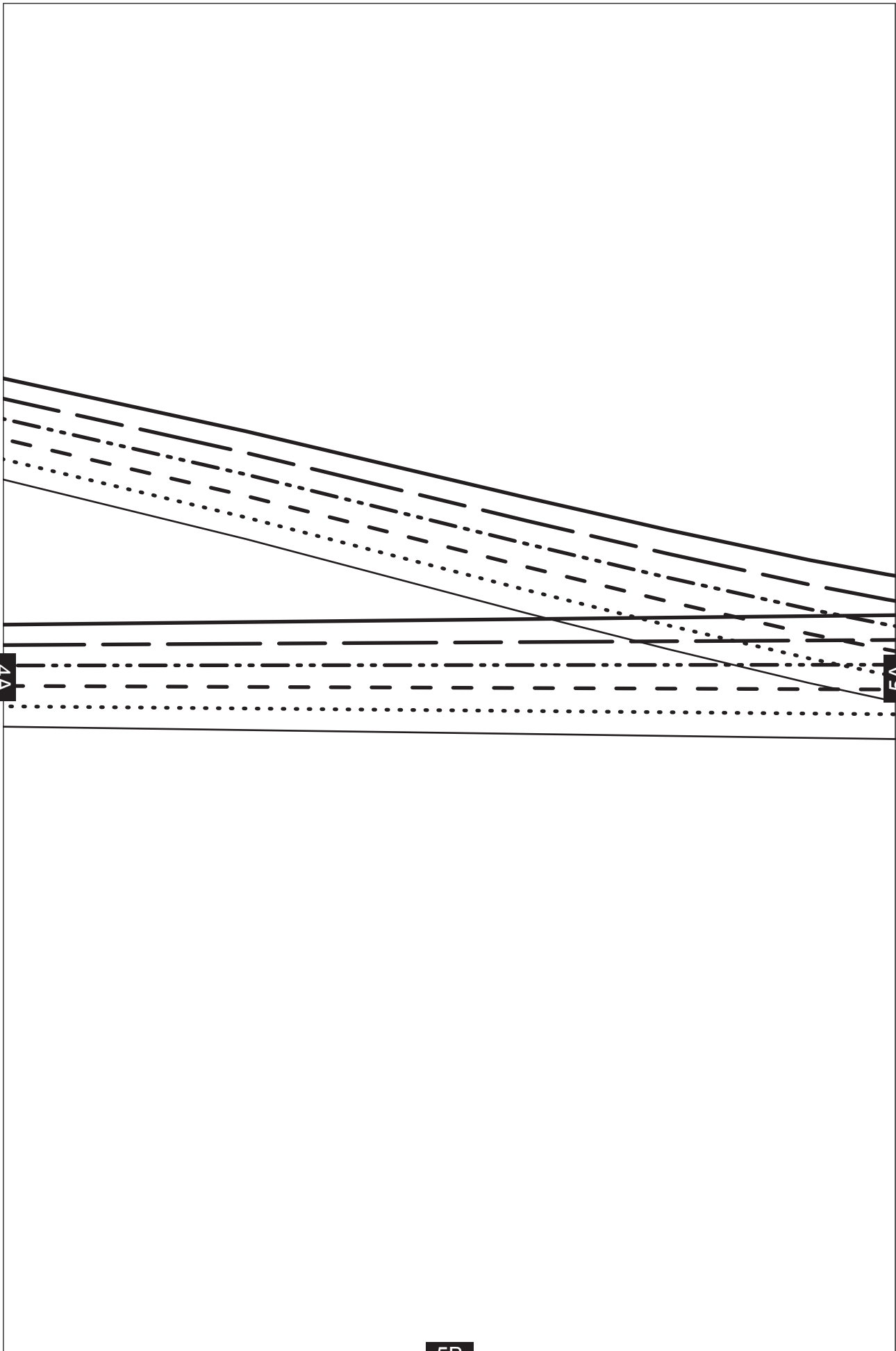


3A

4A

VARIATION: STRAIGHT LEG VERSION CUTTING LINE

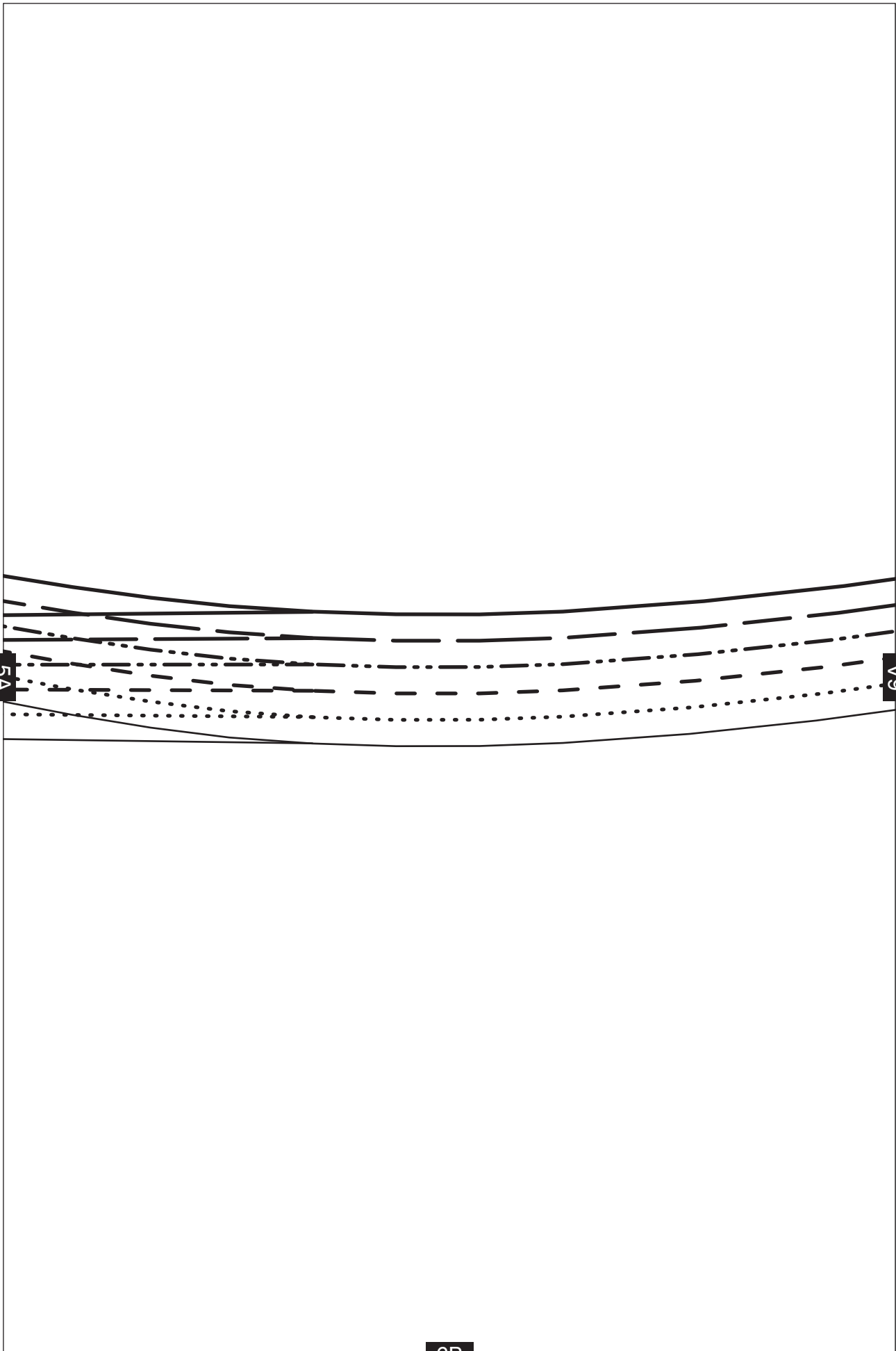
4B

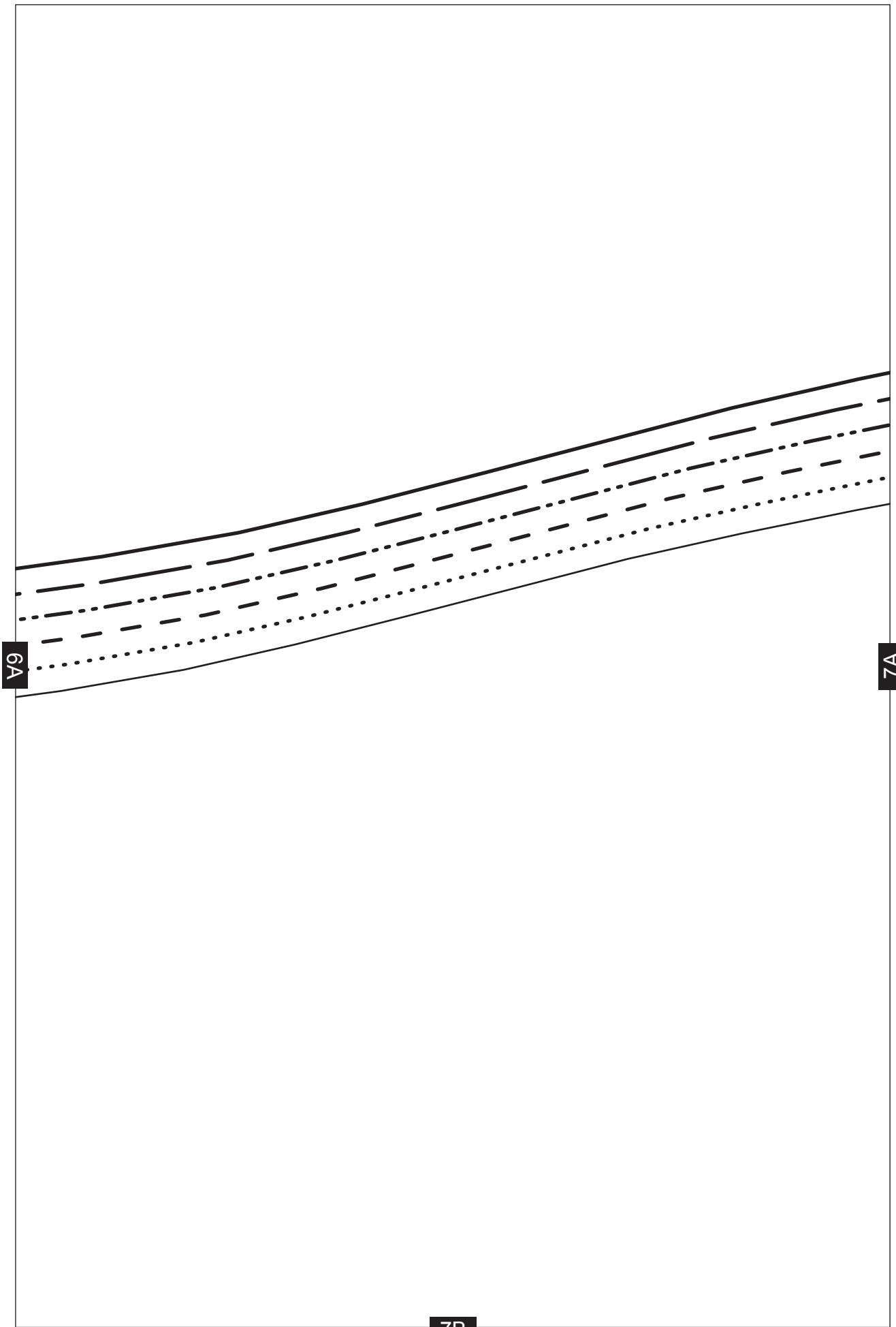


4A

5A

5B

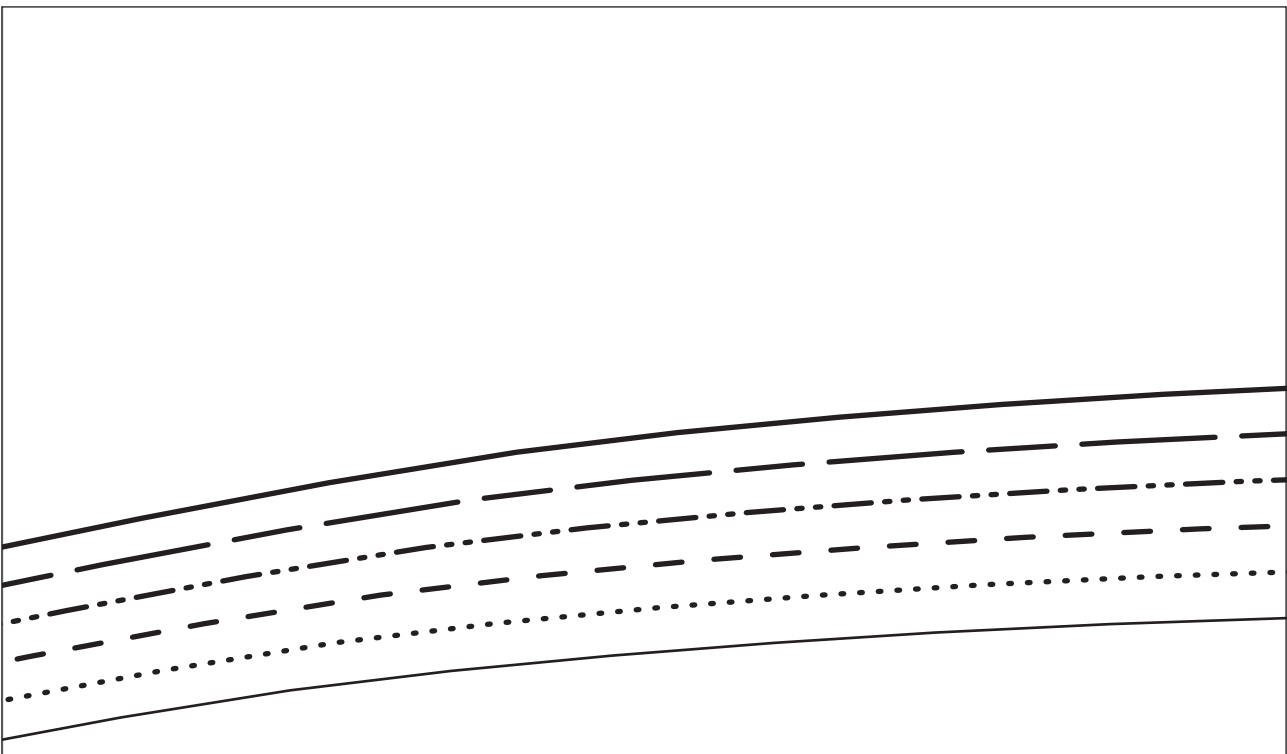




8A

# Flared & Straight -legged Trousers

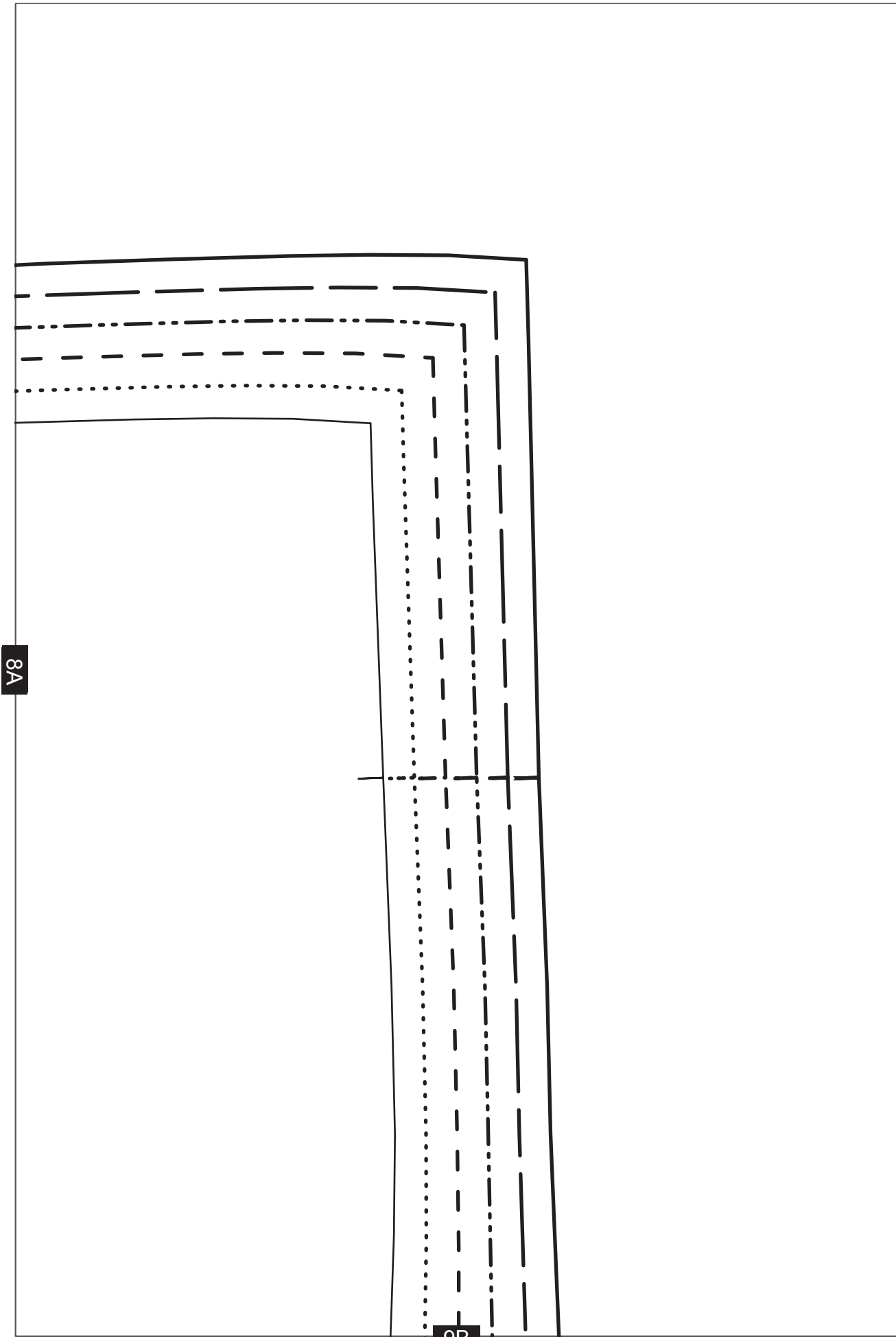
BACK LEG - CUT 2



7A

8B





8A

9B

1B

# Flared & Straight- legged Trousers

POCKET BAG - CUT 2 IN POCKETING

10A

FOLD LINE

10B

2B

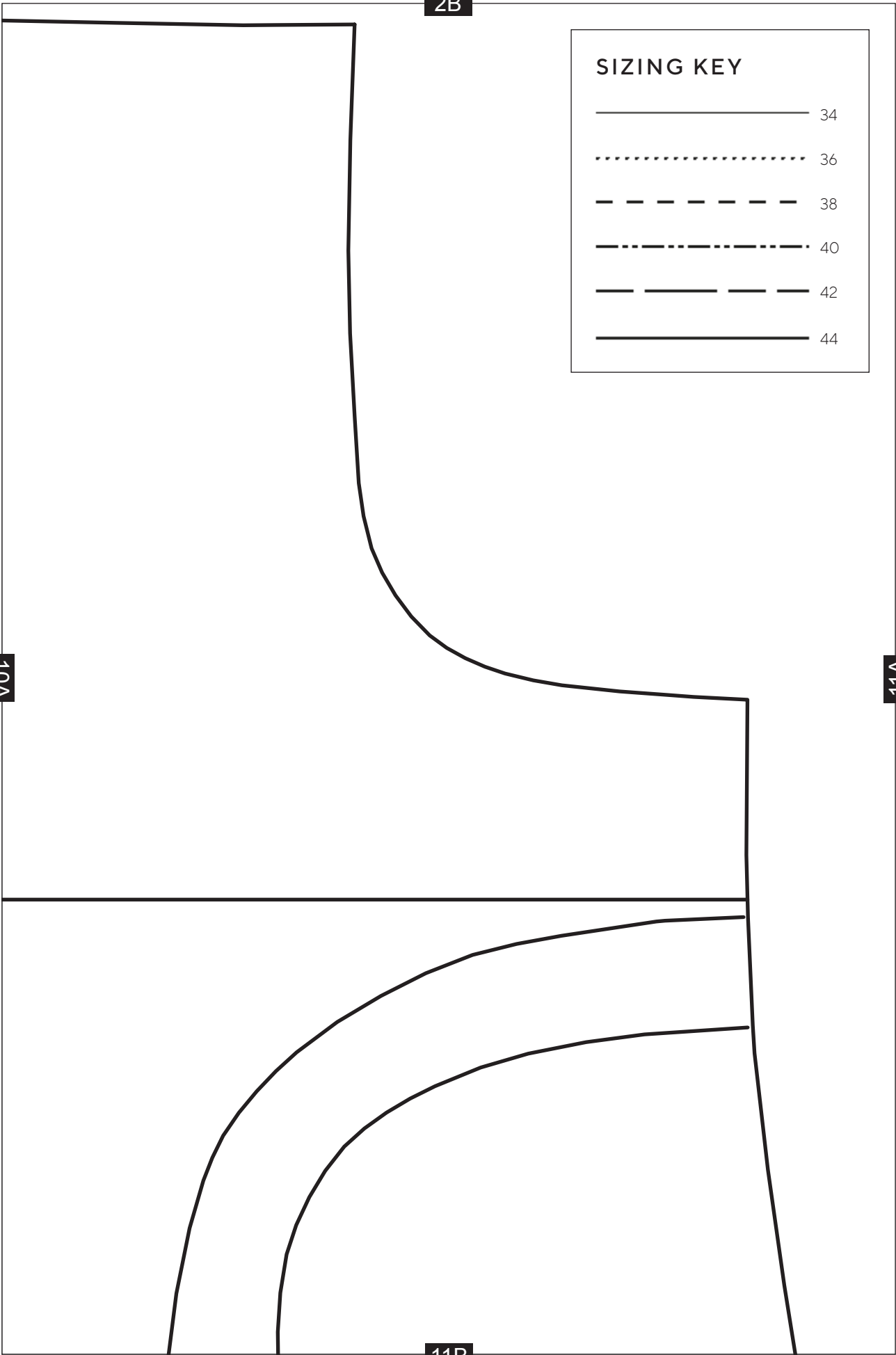
SIZING KEY

—————	34
.....	36
- - - - -	38
- · - · -	40
- - - - -	42
—————	44

10A

11A

11B

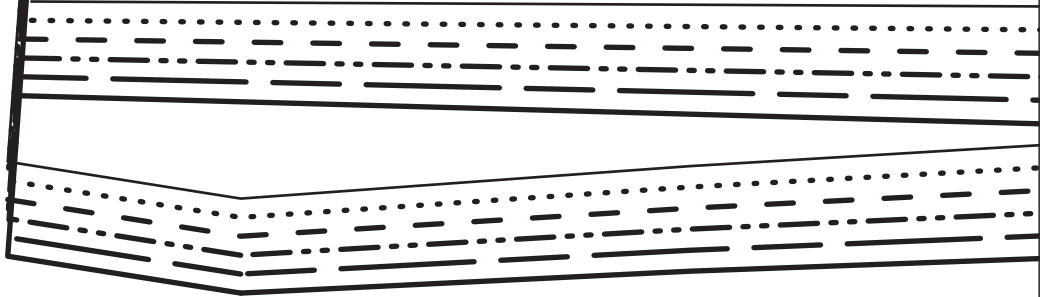


3B

11A

12A

VARIATION: STRAIGHT LEG VERSION CUTTING LINE

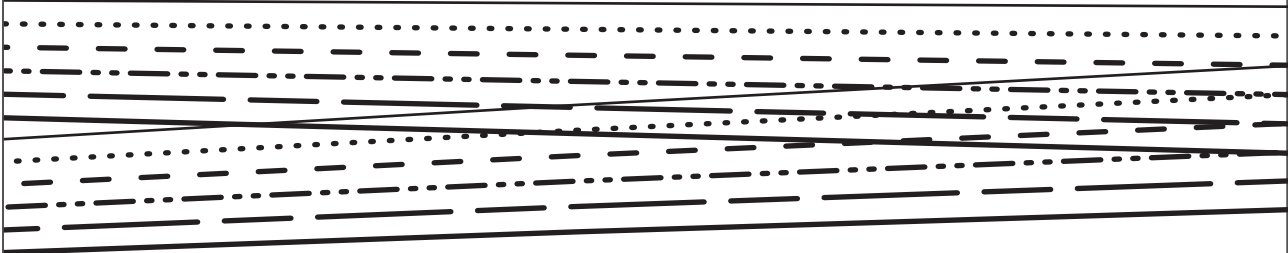


12B

4B

12A

13A



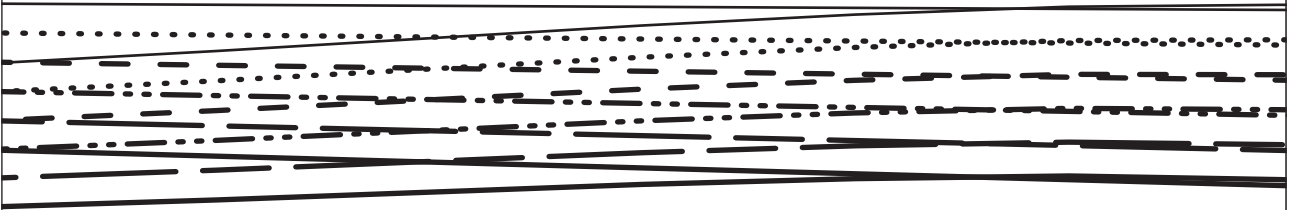
13B

5B



13A

14A



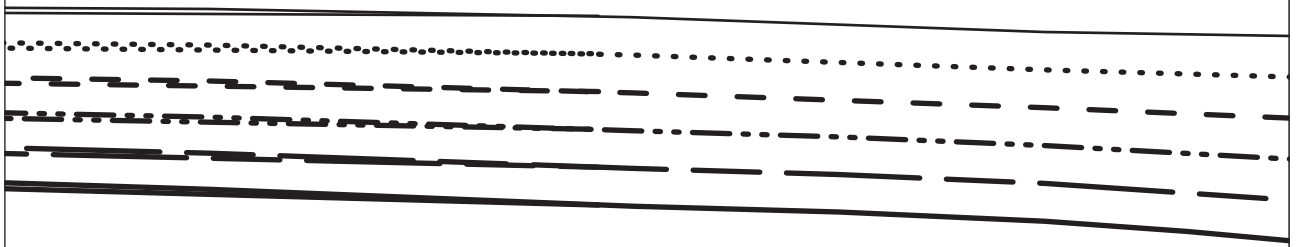
14B

6B

GRAINLINE

14A

15A

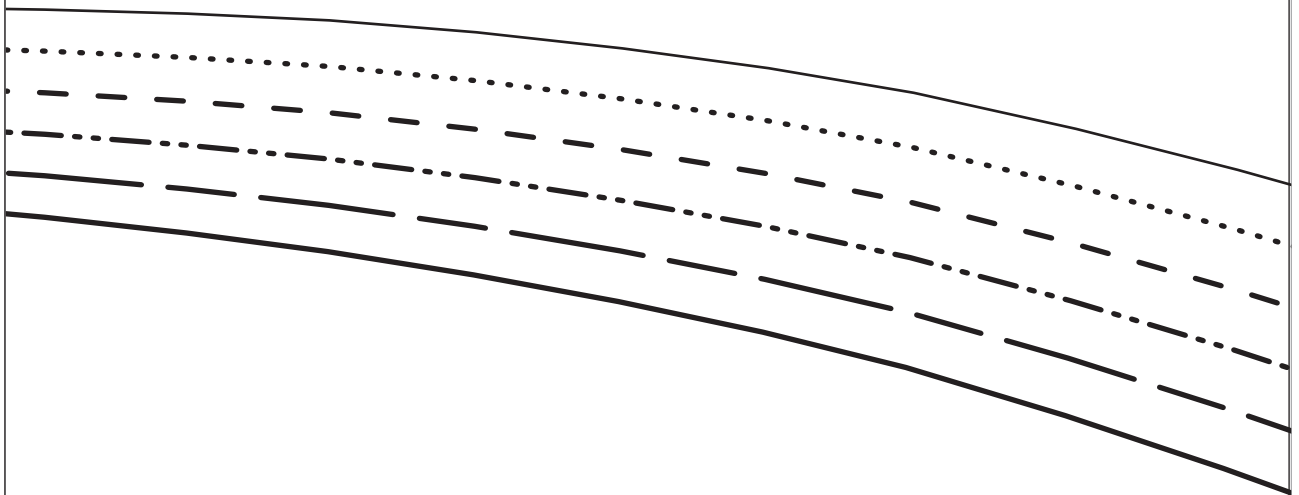


15B

7B

15A

16A



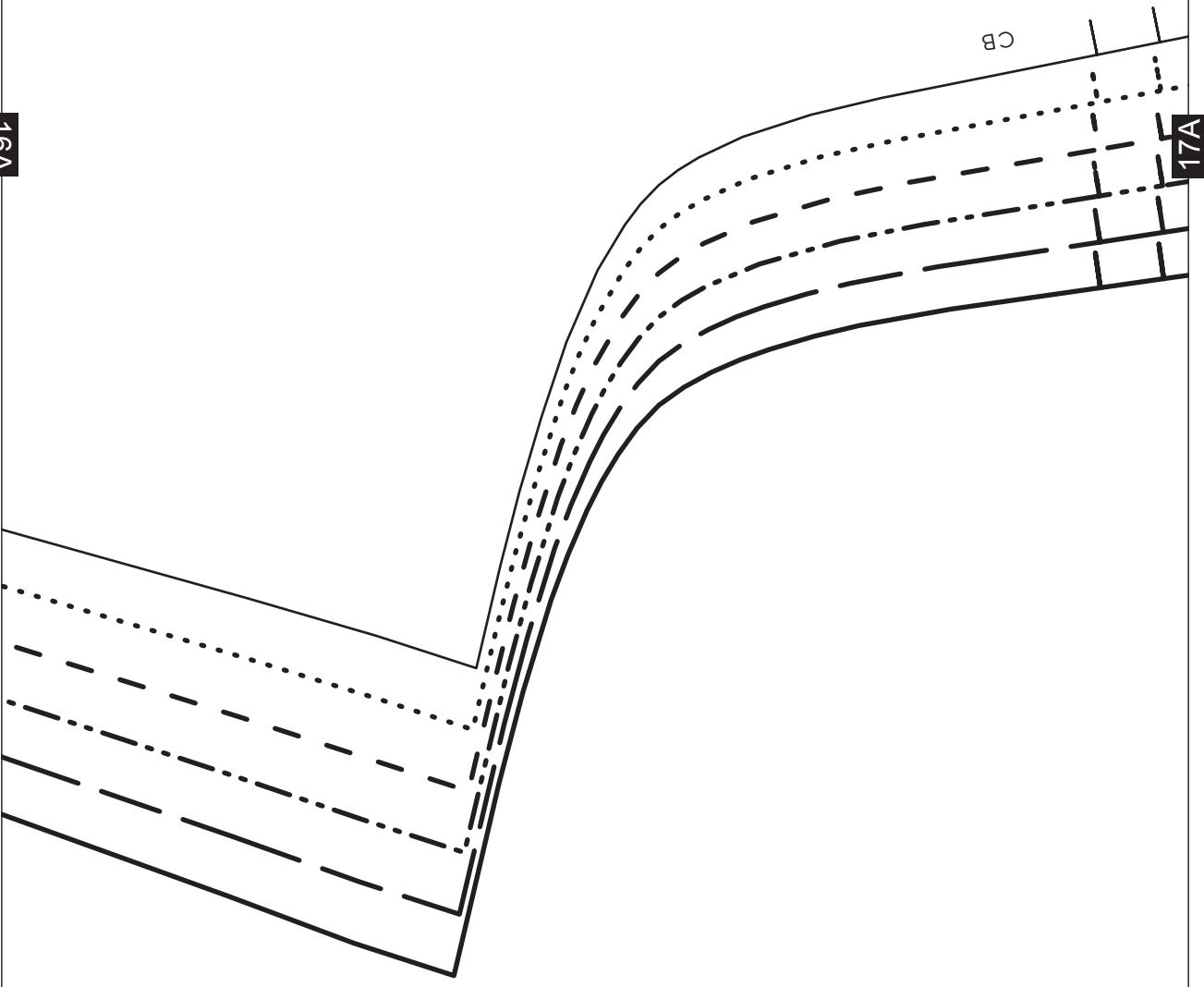
16B



8B



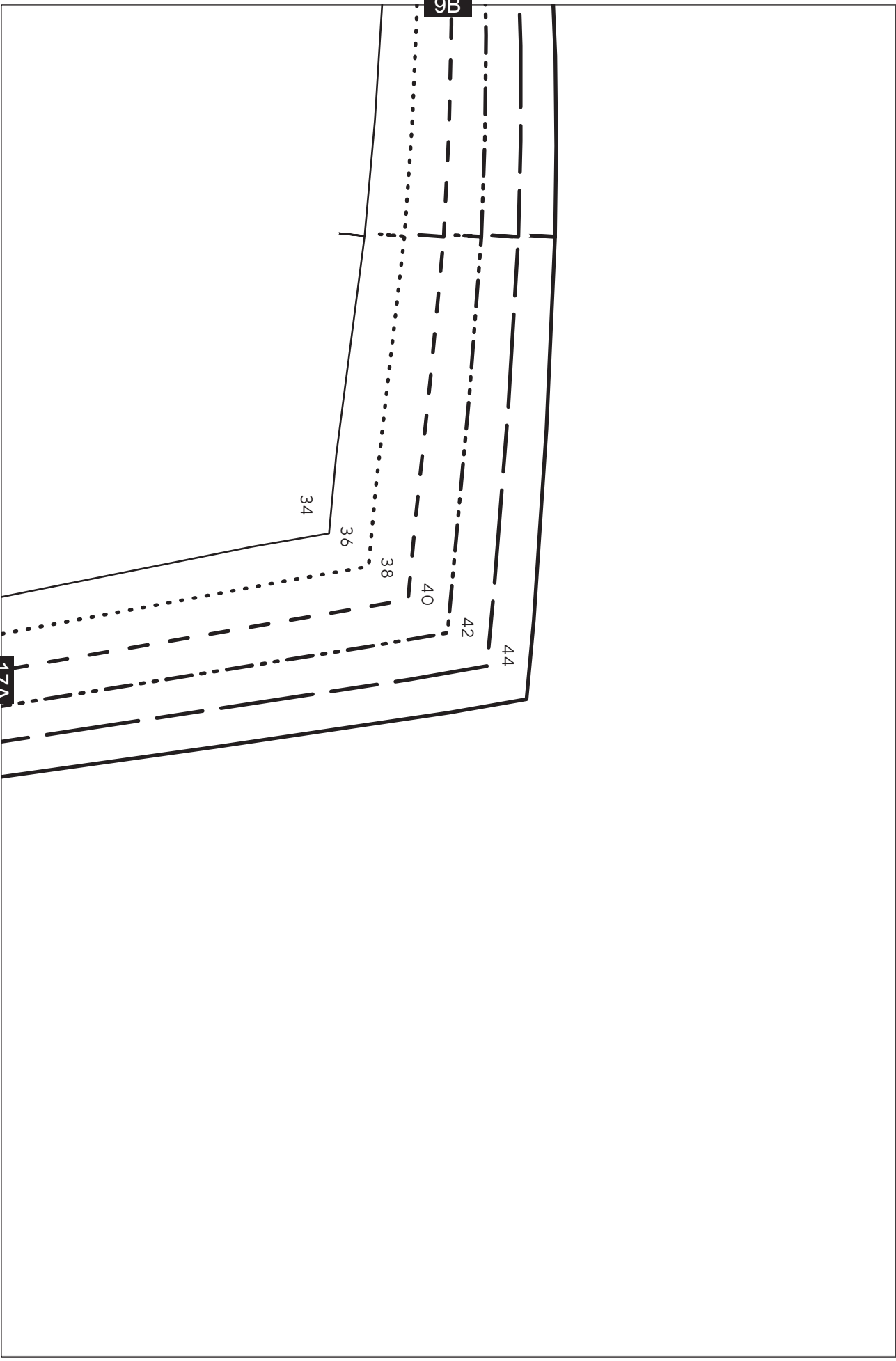
16A



17A

17B

CB



9B

17A

34

36

38

40

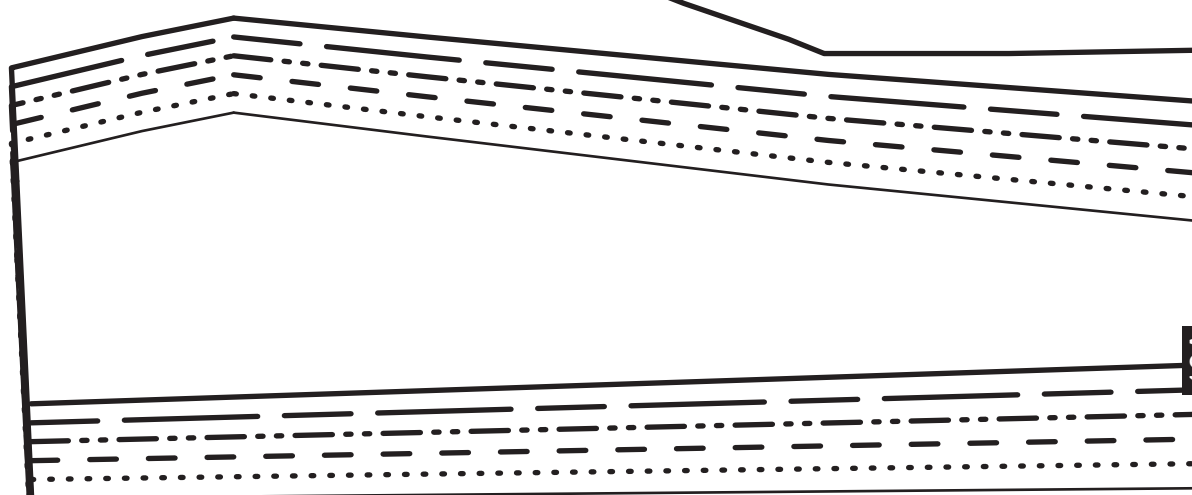
42

44

10B



GRAINLINE



19A

VARIATION: STRAIGHT LEG VERSION CUTTING LINE

19B

11B



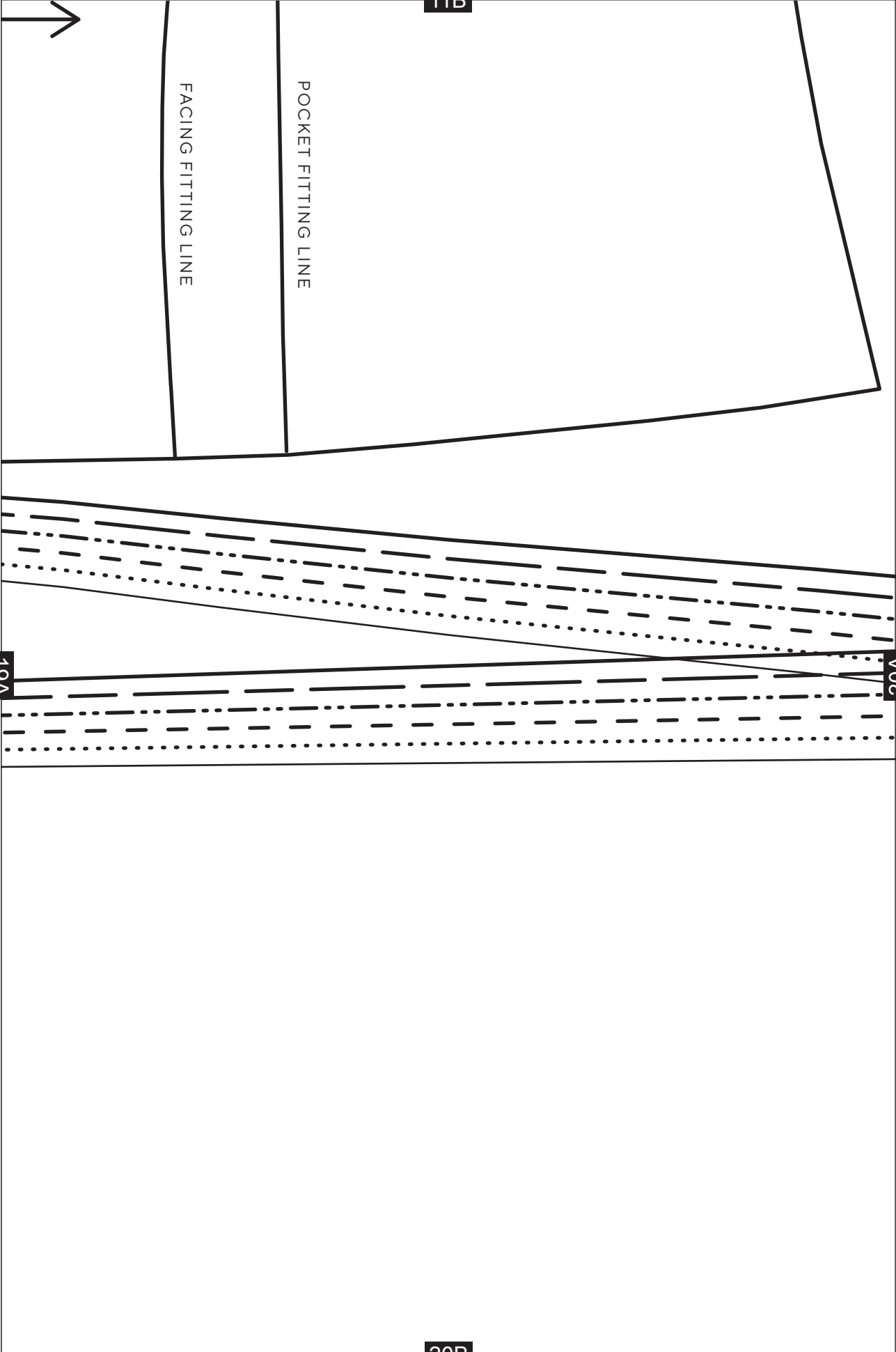
FACING FITTING LINE

POCKET FITTING LINE

19A

20A

20B



12B



20A

21A



21B

13B

21A

22A

GRAINLINE

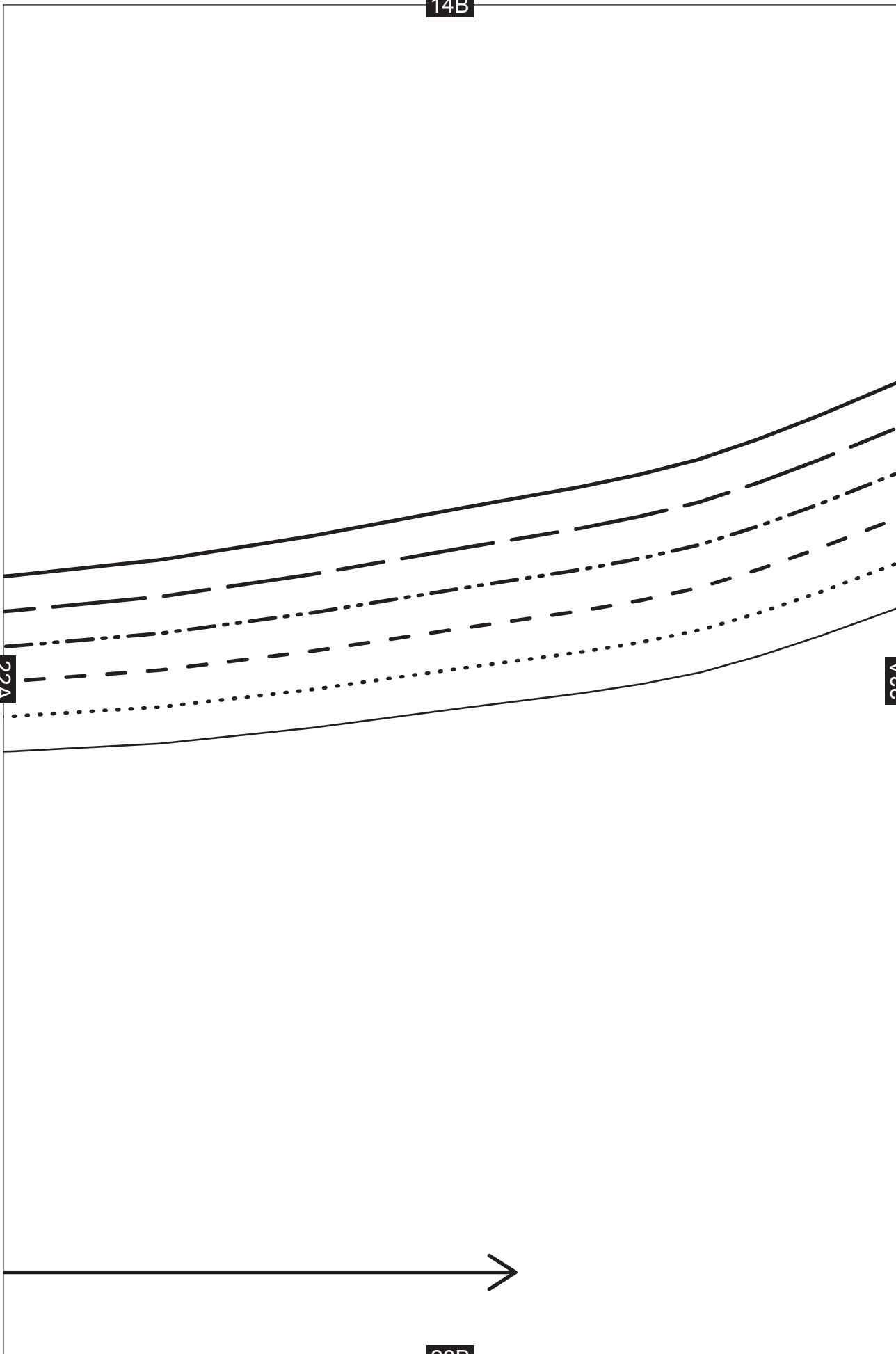
22B

14B

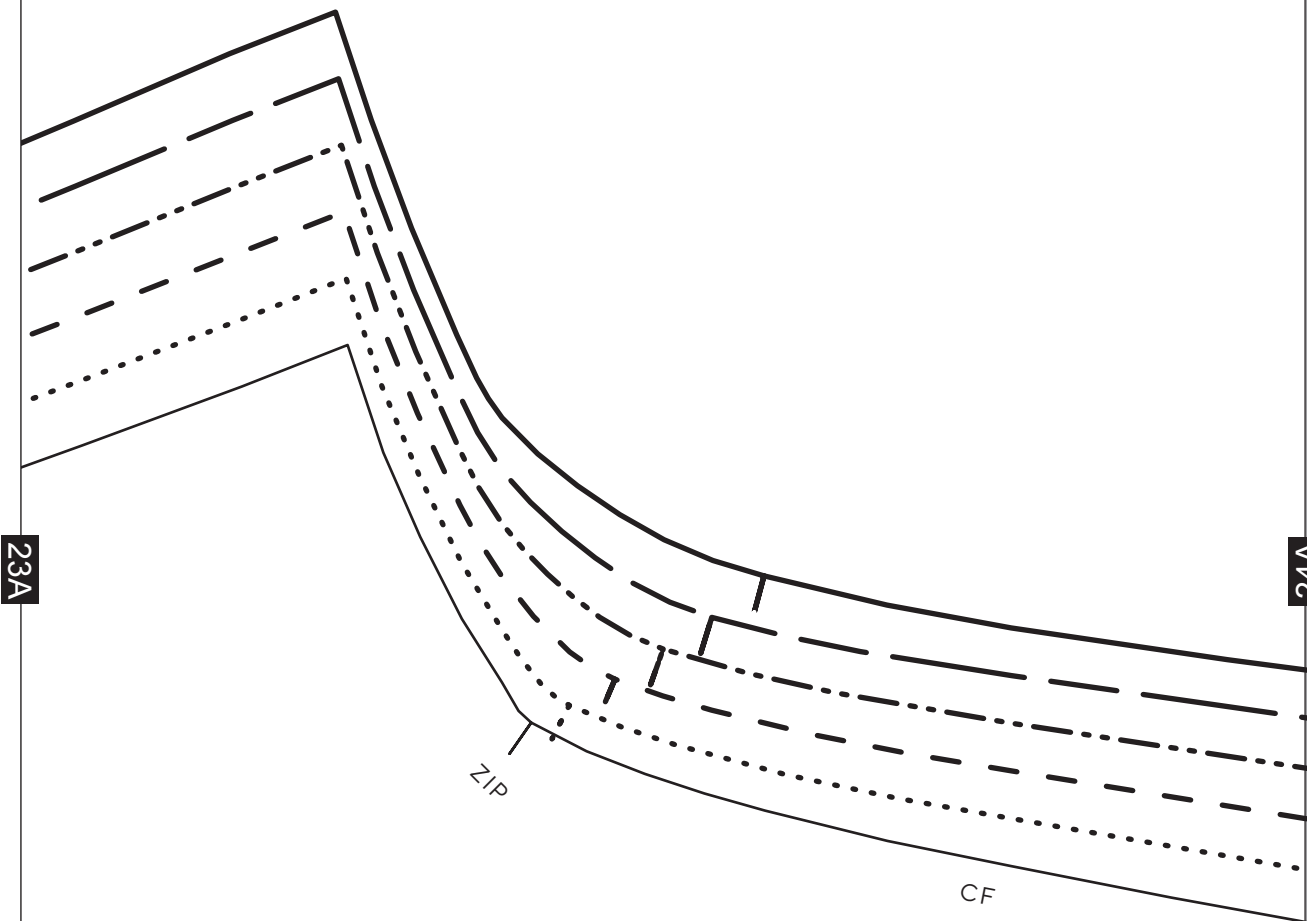
22A

23A

23B



15B



23A

24A

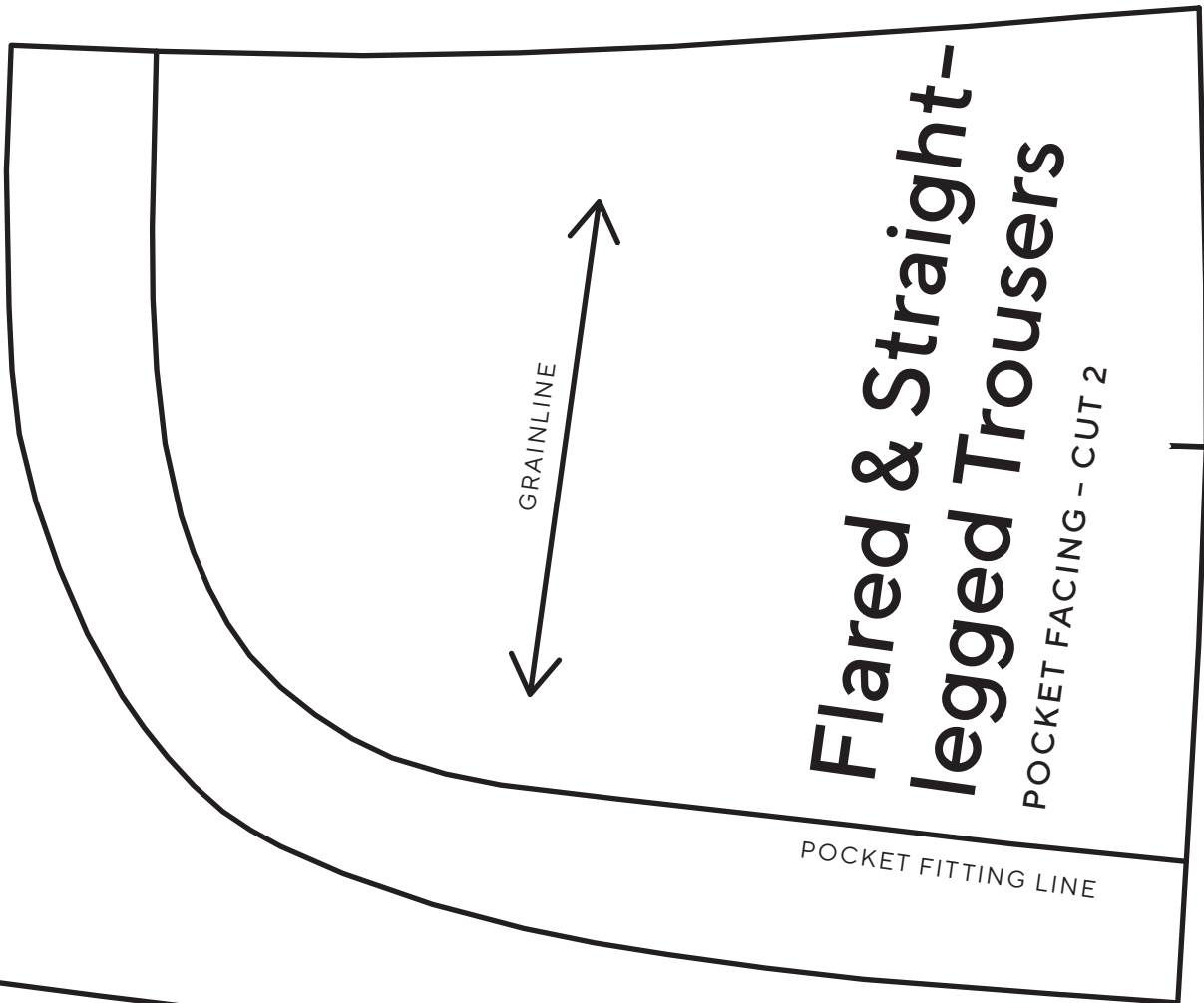
ZIP

CF

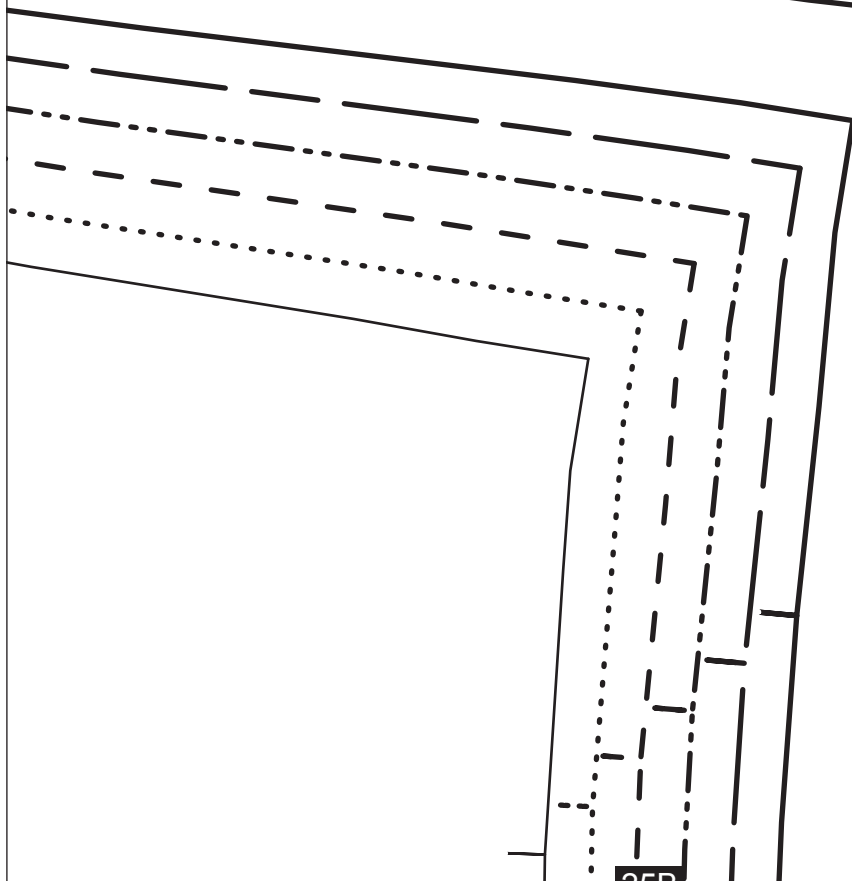
24B



16B



24A

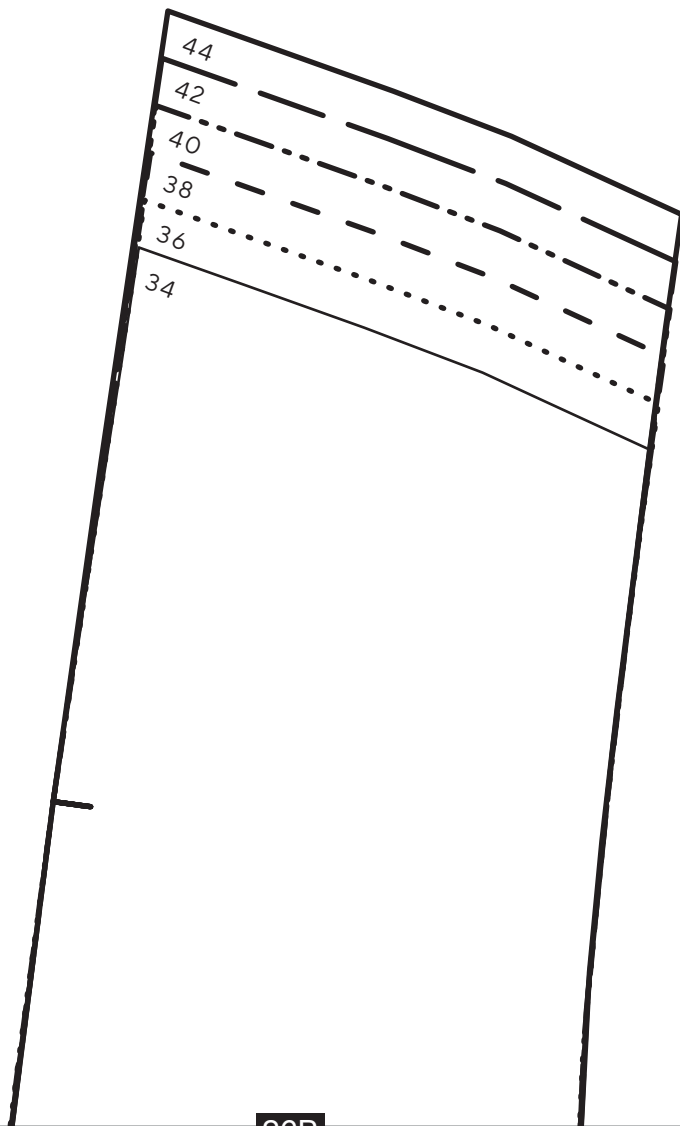


25B

25A

17B

25A



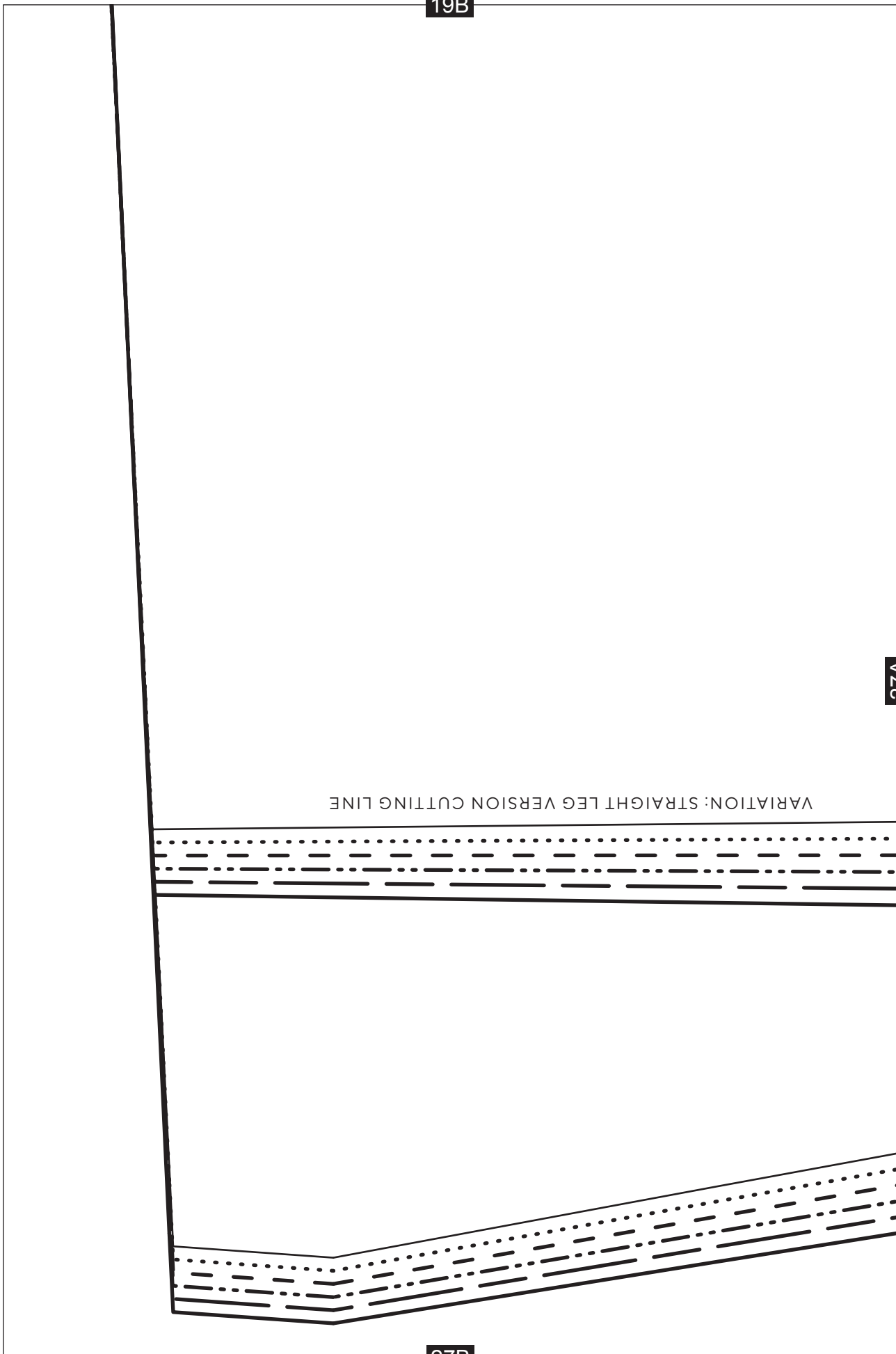
26B

19B

27A

VARIATION: STRAIGHT LEG VERSION CUTTING LINE

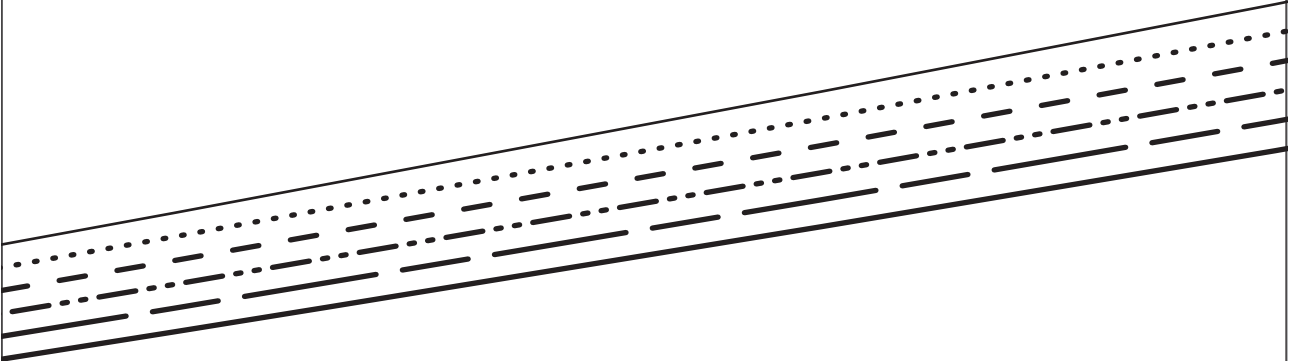
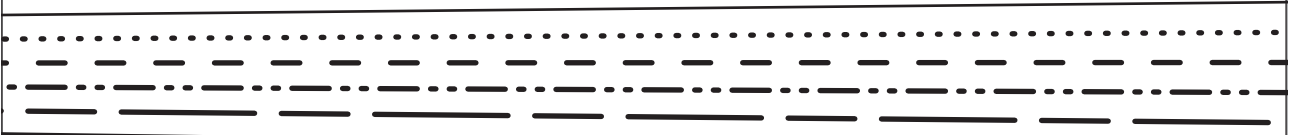
27B



20B

27A

28A

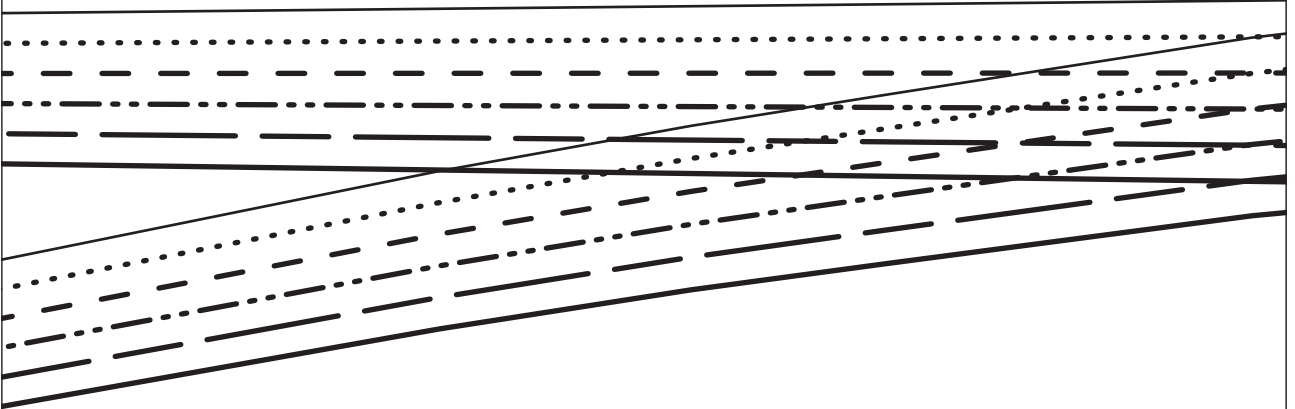


28B

21B

28A

29A

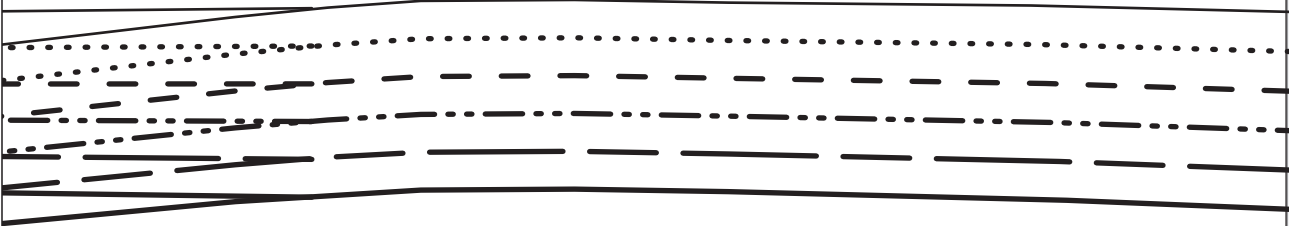


29B

22B

29A

30A

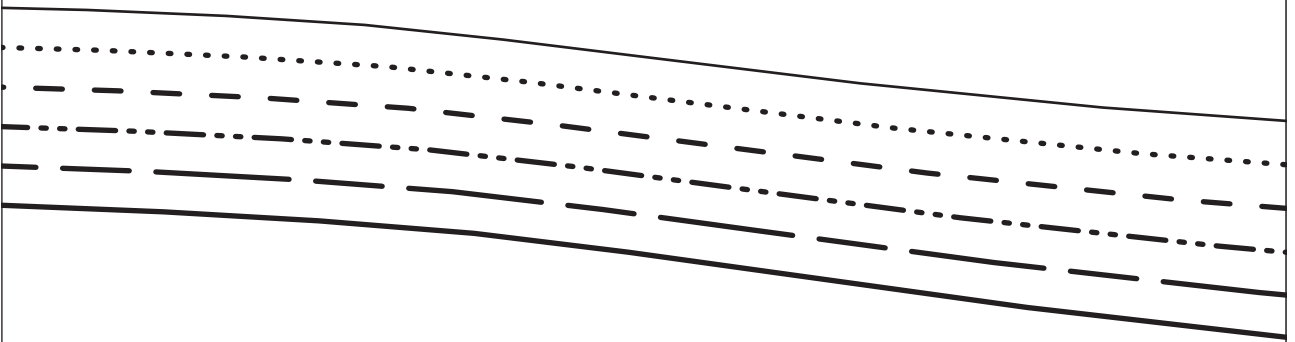


30B

23B

30A

31A



31B

24B

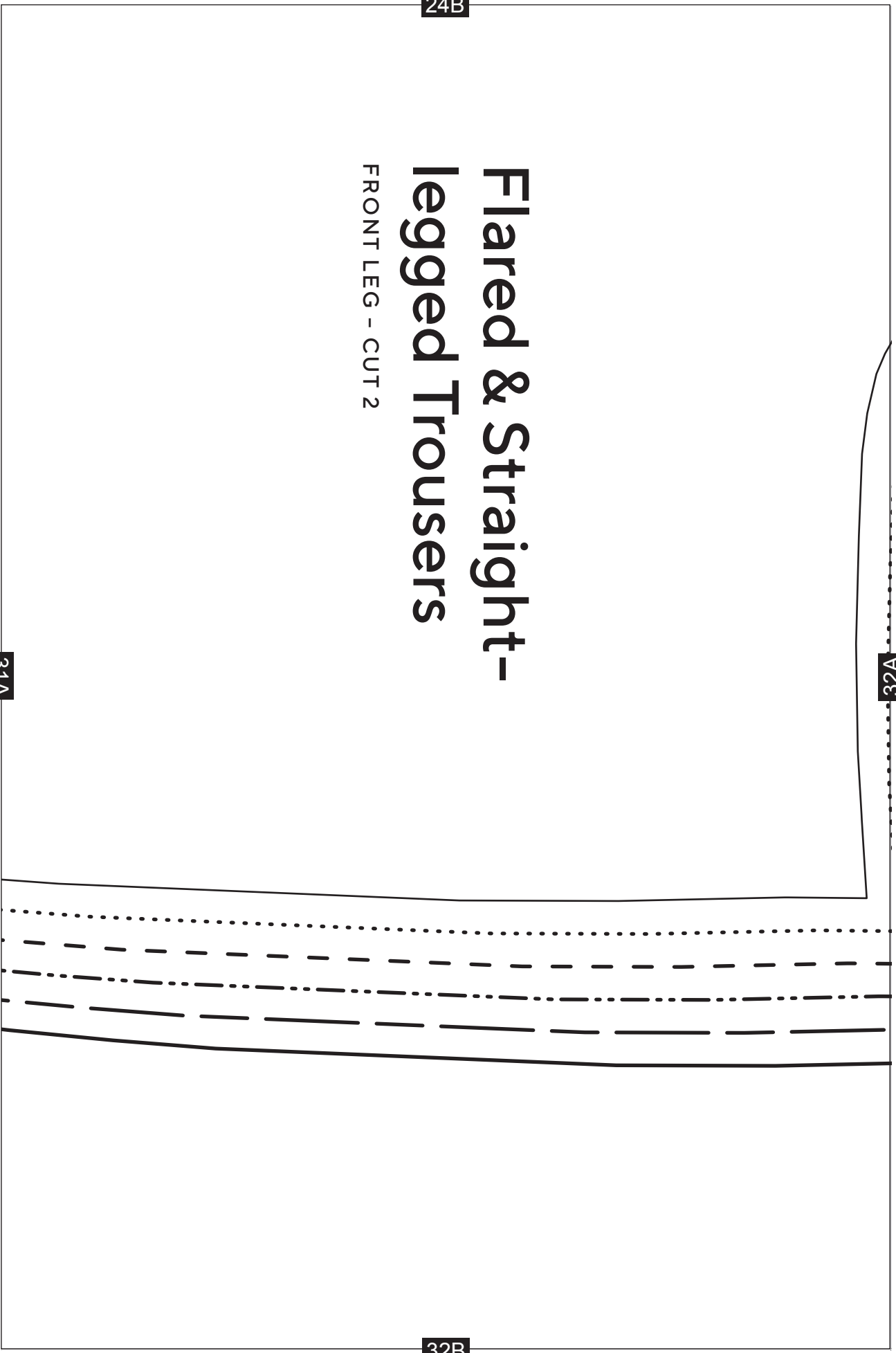
# Flared & Straight- legged Trousers

FRONT LEG - CUT 2

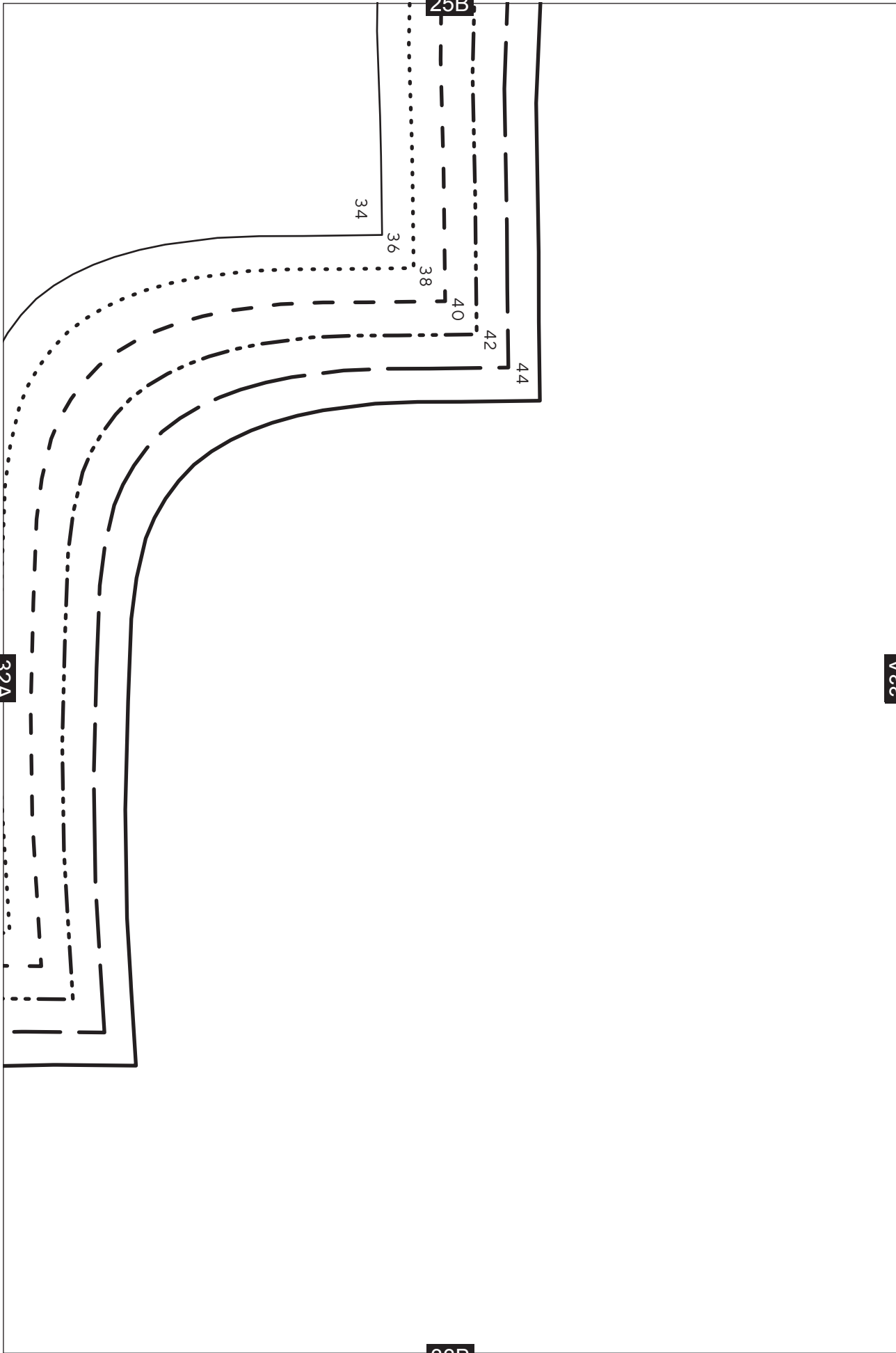
32A

31A

32B







26B

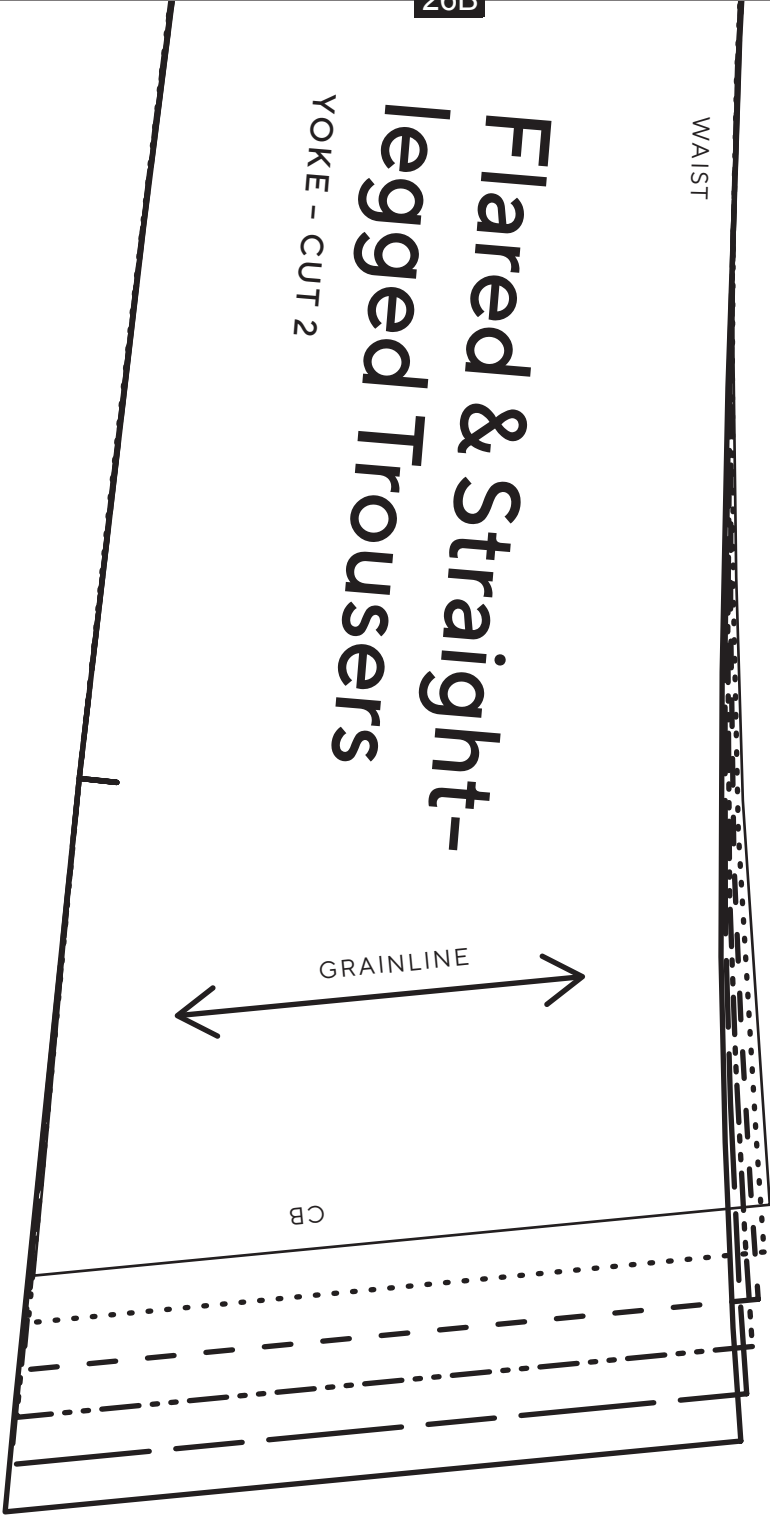
WAIST

# Flared & Straight- legged Trousers

YOKE - CUT 2

GRAINLINE

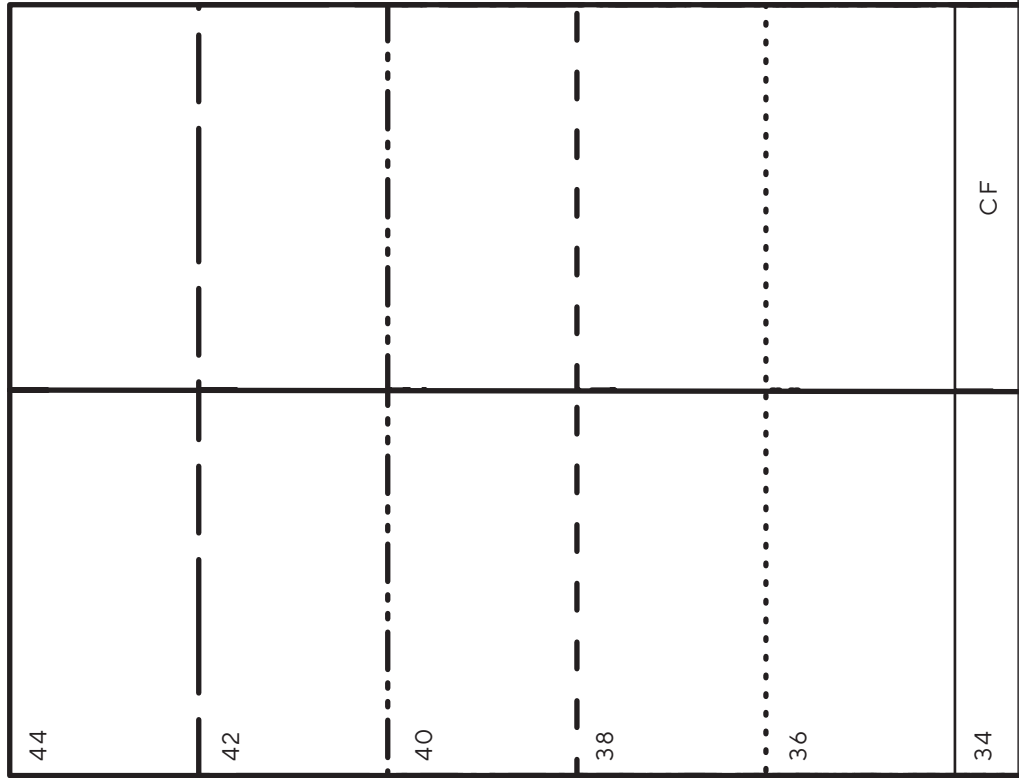
CB



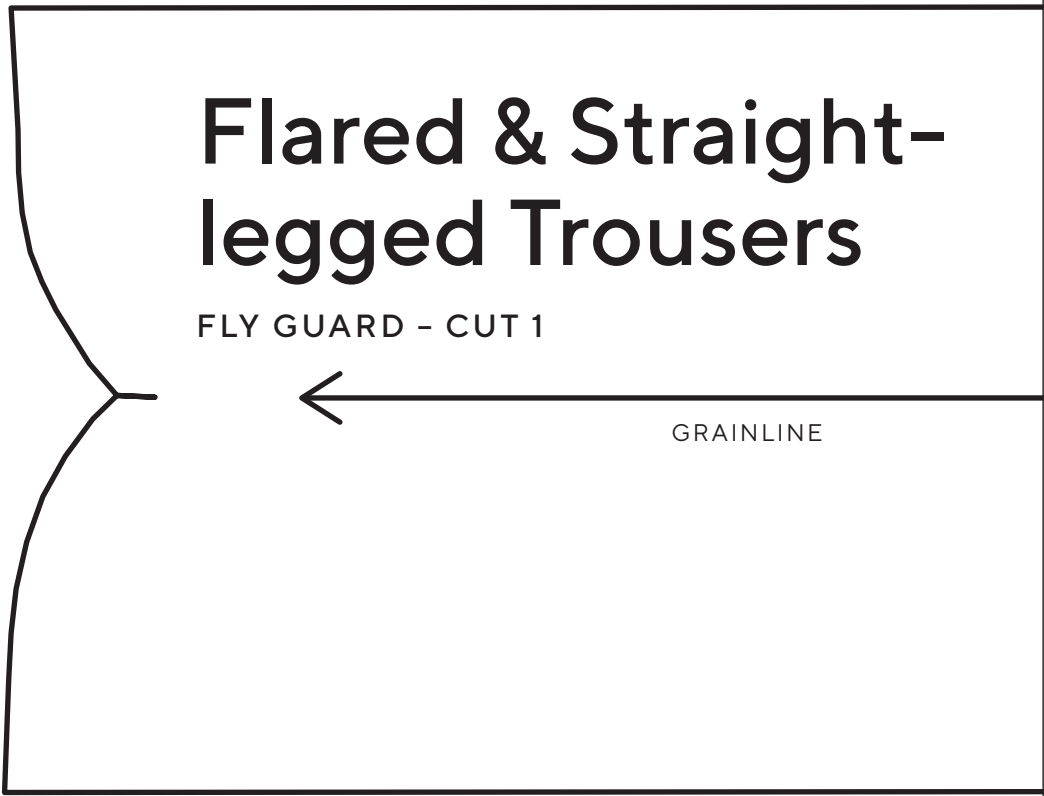
33A

34B

27B



35A



28B

# Flared & Straight -legged Trousers

WAISTBAND - CUT 1

SIDE SEAM

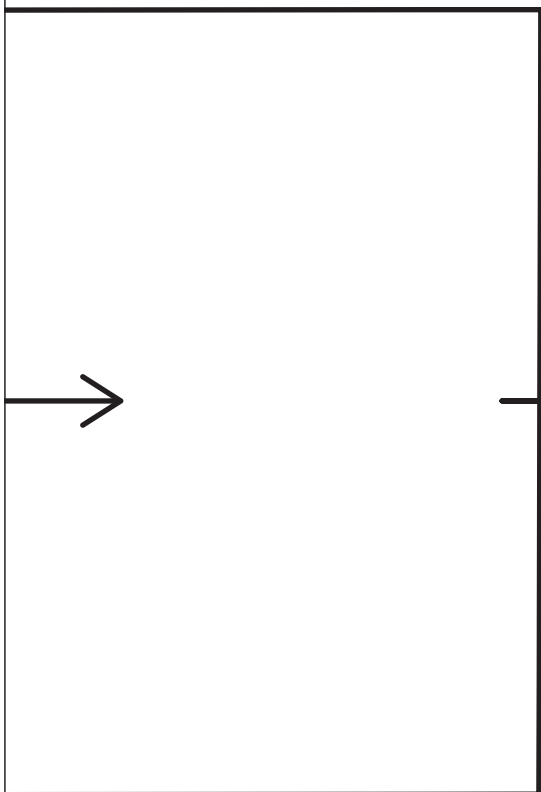
BELT LOOP

LEFT FRONT:  
BUTTON SIDE

44  
42  
40  
38  
36  
34

35A

36A

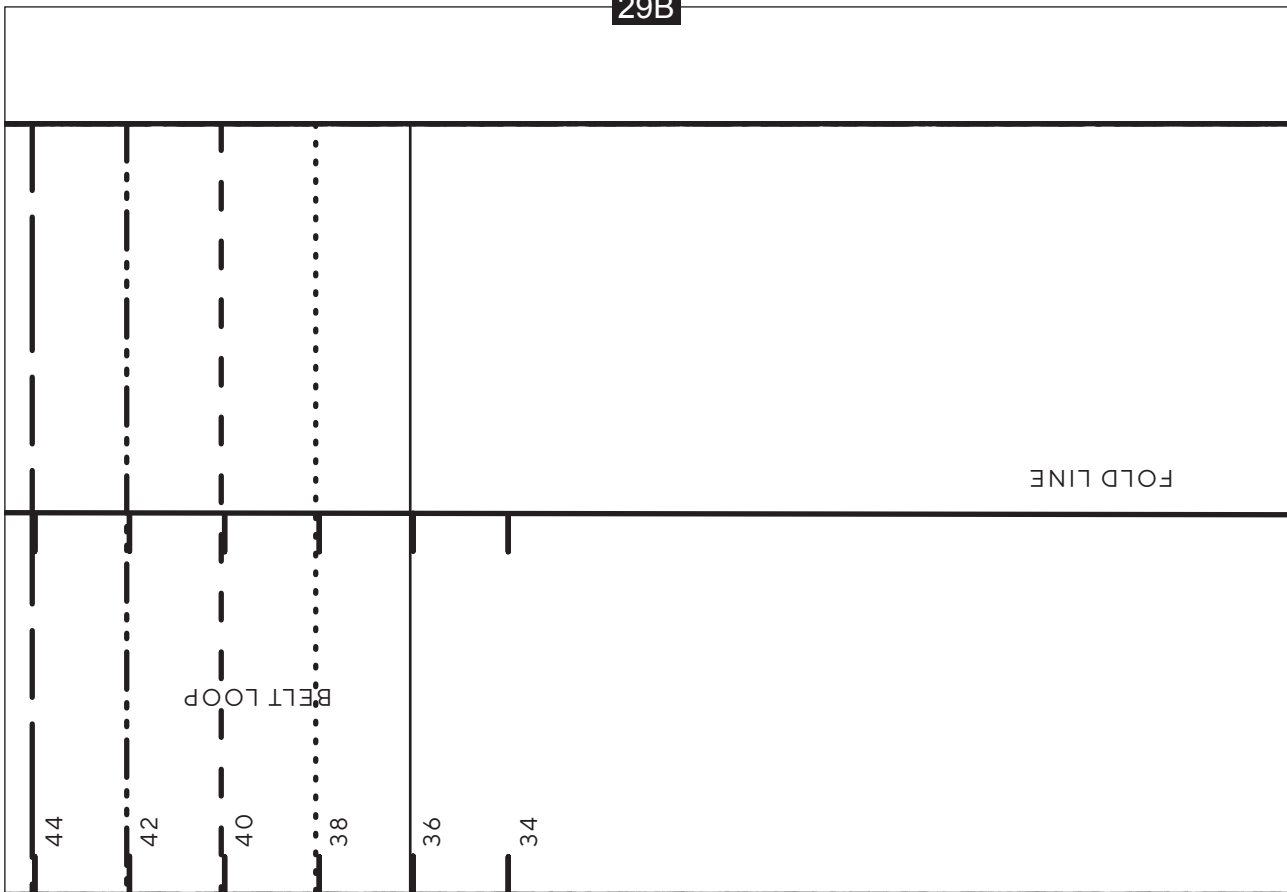


# Flared & St

FLY FACING - CUT 1 IN MA



29B



36A

37A

OVERLOCK EDGE

GRAINLINE



# Straight-legged Trousers

MAINFABRIC + CUT 1 IN INTERFACING

30B



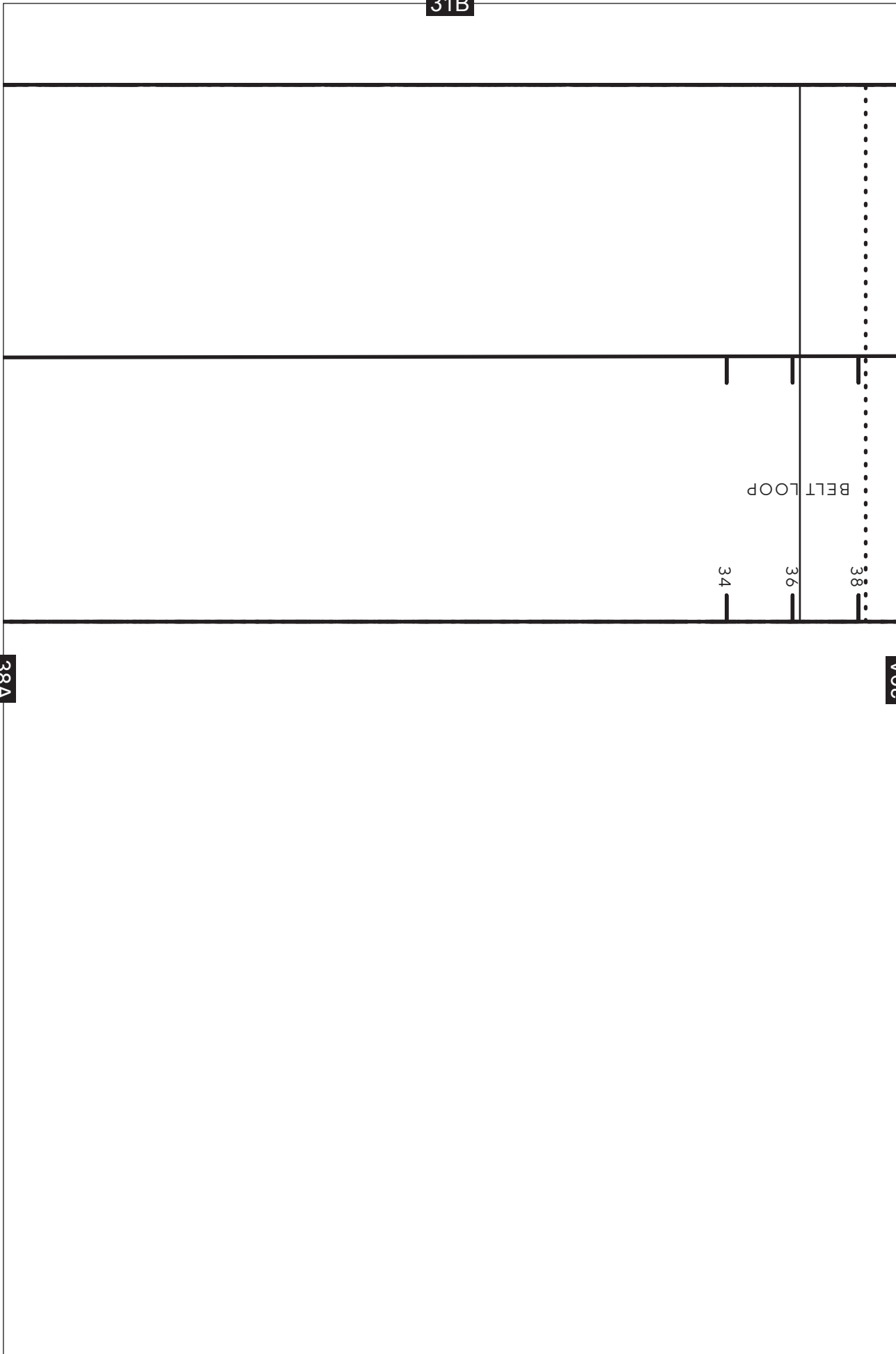
CB

BELT LOOP

37A

38A

31B



38A

39A

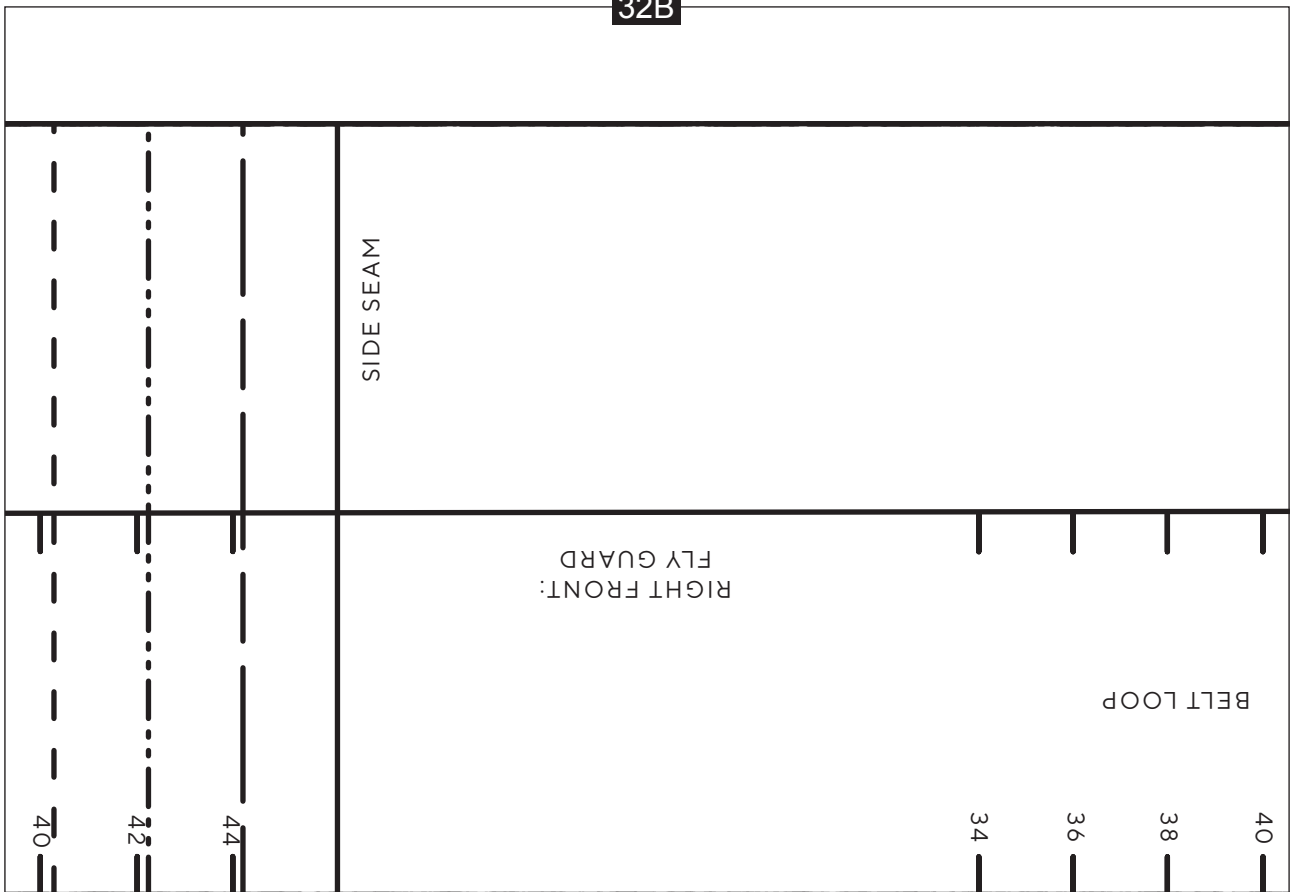
34

36

38

BELT LOOP

32B



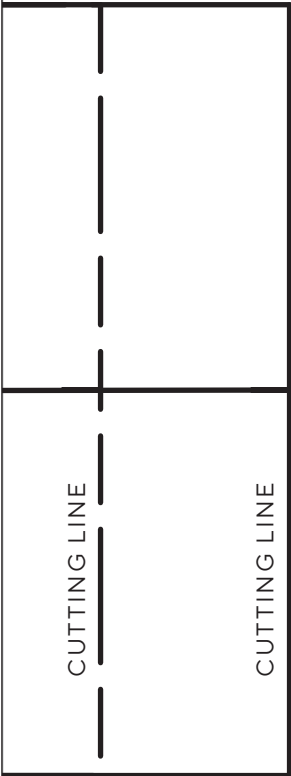
40A

39A





34B



4-1A